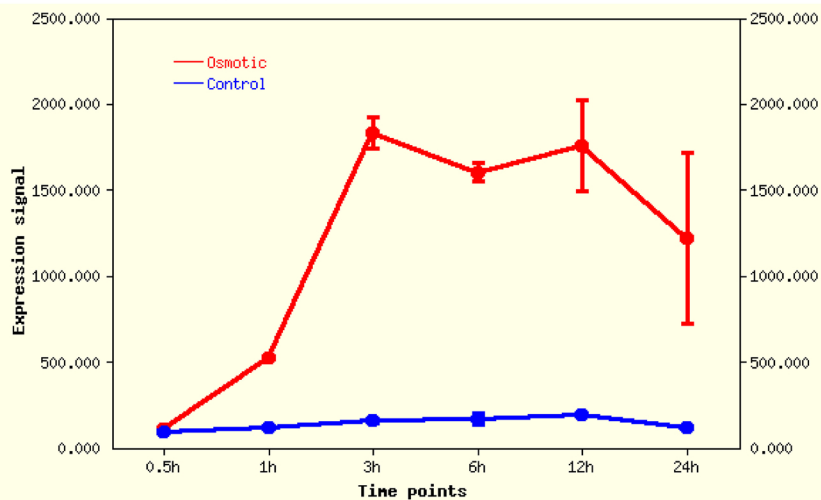
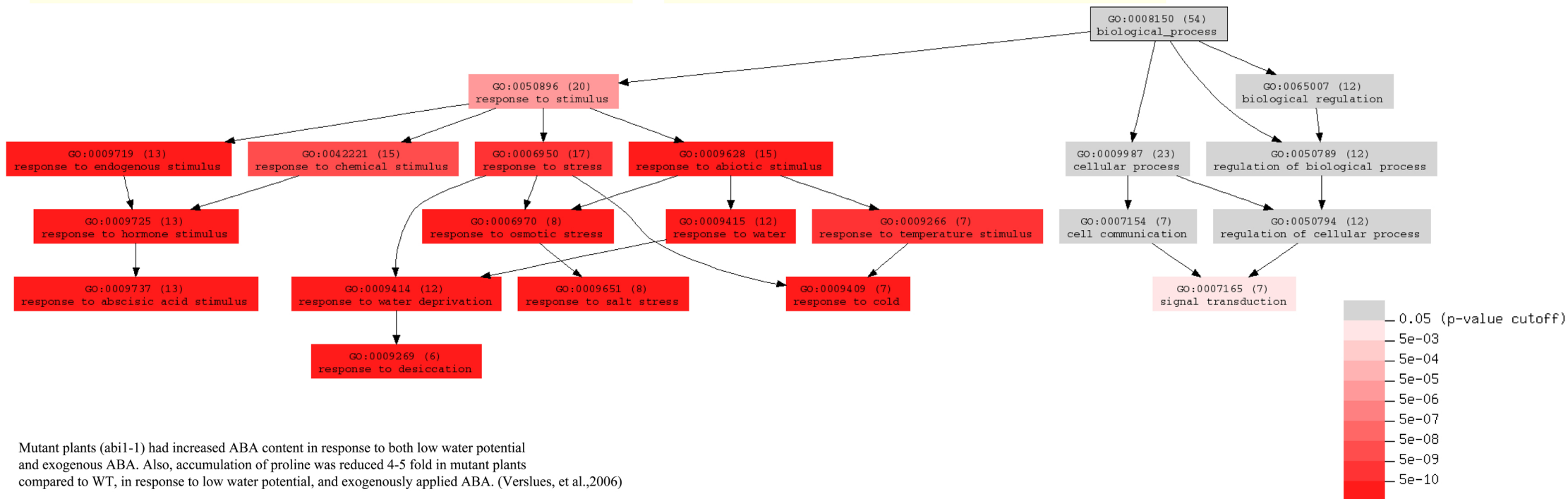
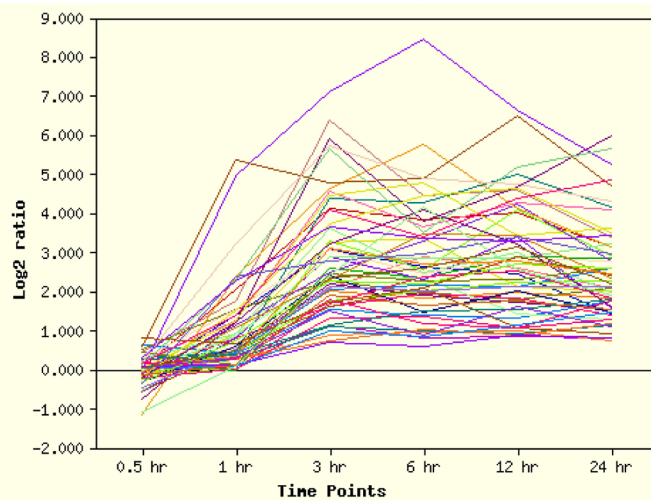


Expression pattern of AT4G26080 (ABI1) in shoot under osmotic stress



Co-expression probe sets of AT4G26080 (ABI1) in shoot under osmotic stress



Mutant plants (*abi1-1*) had increased ABA content in response to both low water potential and exogenous ABA. Also, accumulation of proline was reduced 4-5 fold in mutant plants compared to WT, in response to low water potential, and exogenously applied ABA. (Verslues, et al.,2006)